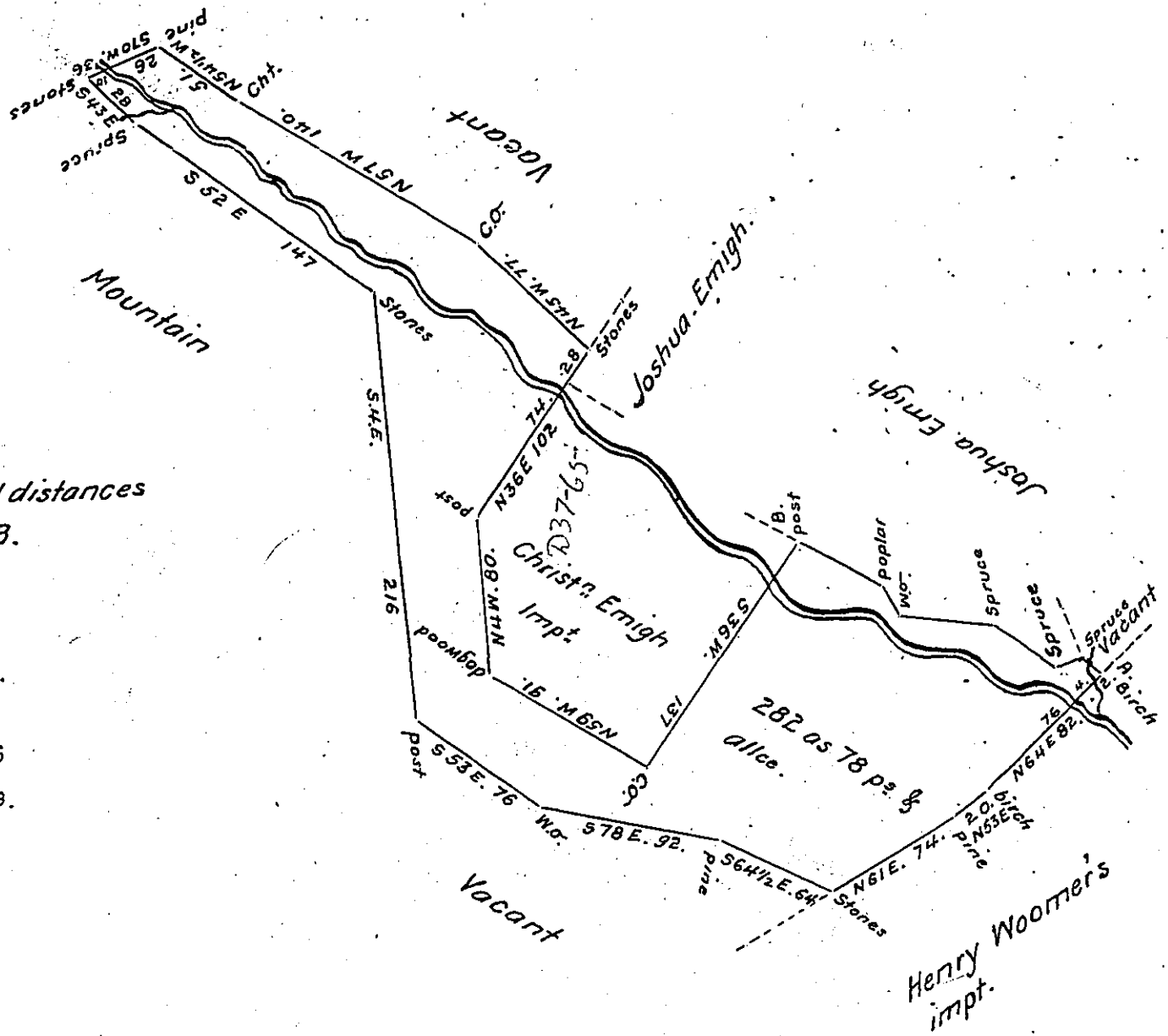


FORM NO 1.



Courses and distances from A. to B.

- N 36 W. 9
- S 79 W. 14
- N 55 W. 39.
- N 82 W. 51
- N 29 W. 16
- N 60. W. 48.

Situate in Half Moon township Centre County containing two hundred and eighty two acres and seventy eight perches and allowance of six per cent, Surveyed for George Anshultz the 23rd day of July 1829. pursuant to his warrant dated the 13th day of June A.D. 1829.

G. Heister Esquire }  
 Surveyor Gen. }

J. B. Shugert

IN TESTIMONY that the above is a copy of the original remaining on file in the Department of Internal Affairs of Pennsylvania, made conformably to an Act of Assembly approved the 16th day of February, 1833, I have hereunto set my Hand and caused the Seal of said Department to be affixed at Harrisburg, this fifth day of September 1907

Henry Howell  
 Secretary of Internal Affairs.